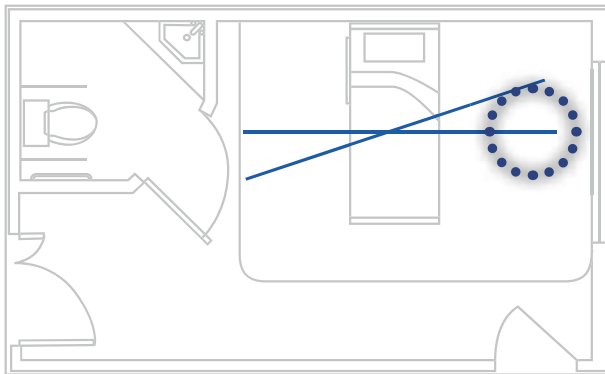


# Room layout examples

Some examples just to explain the diversity of options to use our track system. With our track, combined with our components like Coupling, Turntable and Switch we can offer the smoothest and most comfortable overhead hoist transfer in the world.



## **Straight Monorail**

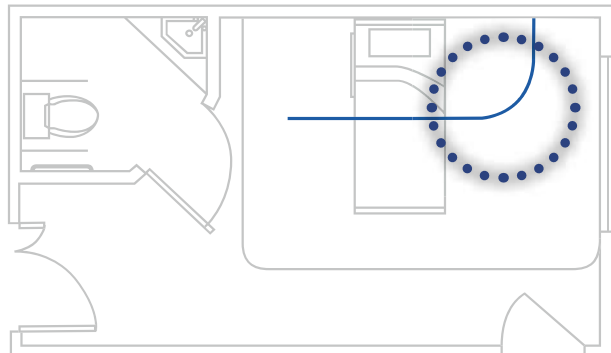
A single rail, running straight to the bed or at an angle. Limited in coverage, repositioning options and flexibility of furniture location.

**More information on page 14**

## **Straight track with Curve**

A straight track with curve, enlarges the coverage and also provides a more suitable place to charge the hoist's batteries when not in use.

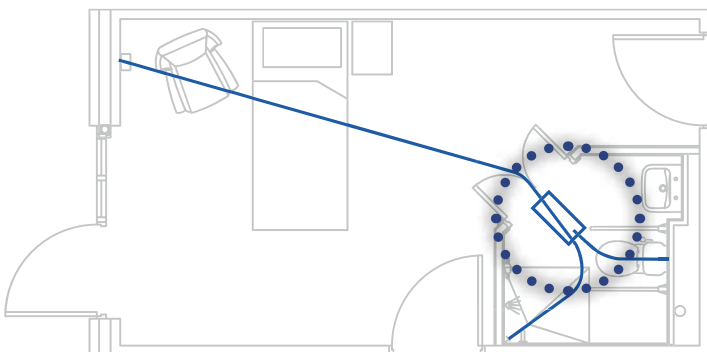
**More information on page 16**

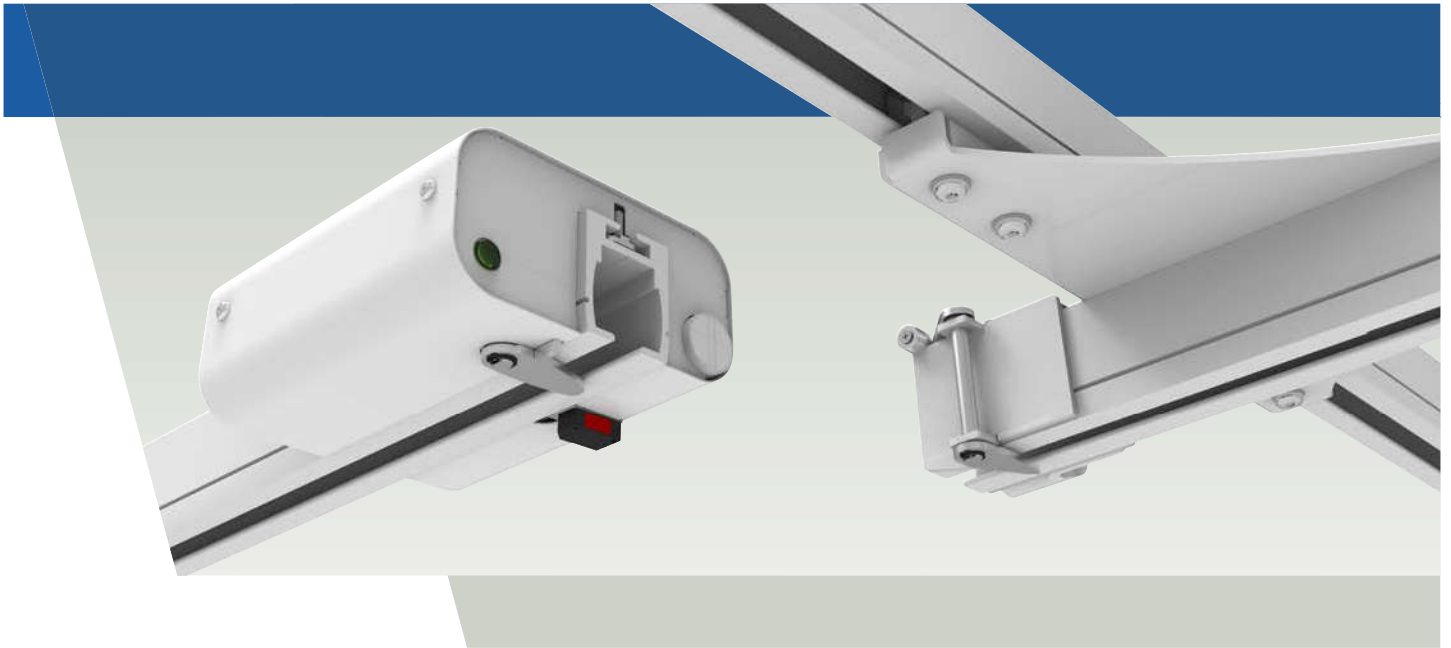


## **Straight track with Curves and Switch**

A combination of curves and track switch can be used in various combinations.

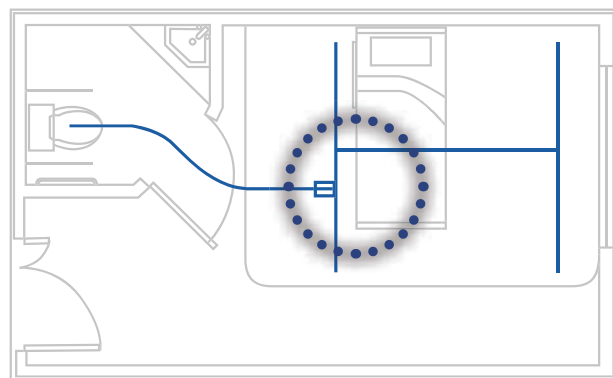
**More information on page 21**



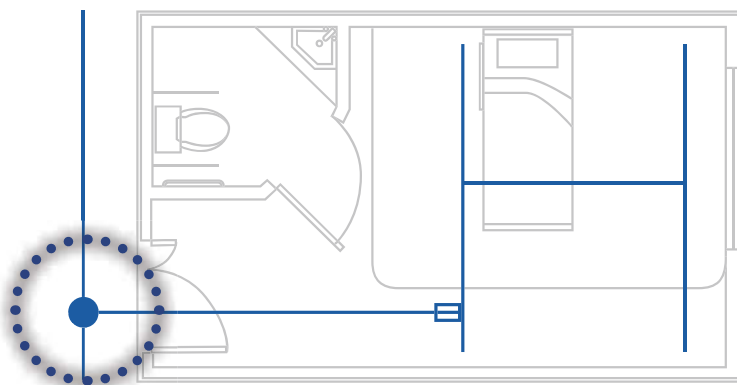


## XY System

An XY system is to provide an unlimited number of lifting places within a room, enabling a person to be lifted from practically anywhere within the four walls, can also be combined with a Coupling to be able to connect the traverse rail to a fixed rail. This will allow the Hoist to leave the XY system. This way, an XY system can also be connected to another XY system.



**More information on page 22**



## Rail connected to Turntable

Leaving the room entering the hallway, a turntable allows for a change of direction. The turntable is available in a three or four way version.

**More information on page 20**